

The self-gripping clamps can be used whenever a conductor, a cable or a rope made of aluminium, aluminium/steel, copper or steel, even if insulated, has to be stretched. The body is made of high-strength hot forged steel, in order to minimise weight in comparison with the working load.

The galvanisation treatment on the surface protects from oxidation.

According to the final model, the clamps are made with machined body clamps or body clamps sizes on demand, as per the following tables.

The most important characteristic of the clamp with interchangeable jaws is the possibility to use the same clamp for working on conductors or ropes or fiber optic cable of different diameters only by changing the jaws; this feature makes it possible to reduce the operating costs.

The characteristic of this new Tesmec clamp is to allow a large range of ropes and conductors diameters by using a small number of interchangeable or machined jaws

Warning: it is strictly forbidden to use jaws of different manufacturer or origin from the specific jaws suggested by Tesmec S.p.A. for each type of clamp. The use of jaws of different manufacturer/origin doesn't guarantee the full functioning of Tesmec product on its all



MOT 130



MOT 140



MOT 150



MOT 020

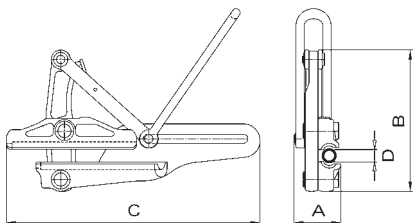


MOT 170



Model	Dimensions [mm]				Breaking load [kN]	Max Working load [kN]	Mass [kg]	Use		
	A	B	C	D				Steel rope	Conductor Interchangeable Jaws	Conductor Machined body clamps
MOT 130 GC	-	-	-	7-16	64	21	2.5	-	yes	-
MOT 140	80	225	380	8-18	125	42	7	yes	-	-
MOT 150 GC	80	225	380	14-23	125	42	7	-	yes	-
MOT 170 GC	100	300	535	23-32	225	75	15	yes	yes	yes
MOT 020	90	280	400	9.5-39	220	73	17.5	yes	yes	-

* Max admissible working load could be different depending on local legislation about safety factor



MACHINED BODY CLAMPS DIMENSIONS

Clamp Model	Type	D [mm]	Use
MOT 170 SF	-	18 ÷ 24	Steel Rope
MOT 170 SC YY	26	22.8 ÷ 26	Aluminium conductor
	29	26 ÷ 29	Aluminium conductor
	32	29 ÷ 32	Aluminium conductor
	36	32 ÷ 36	Aluminium conductor